

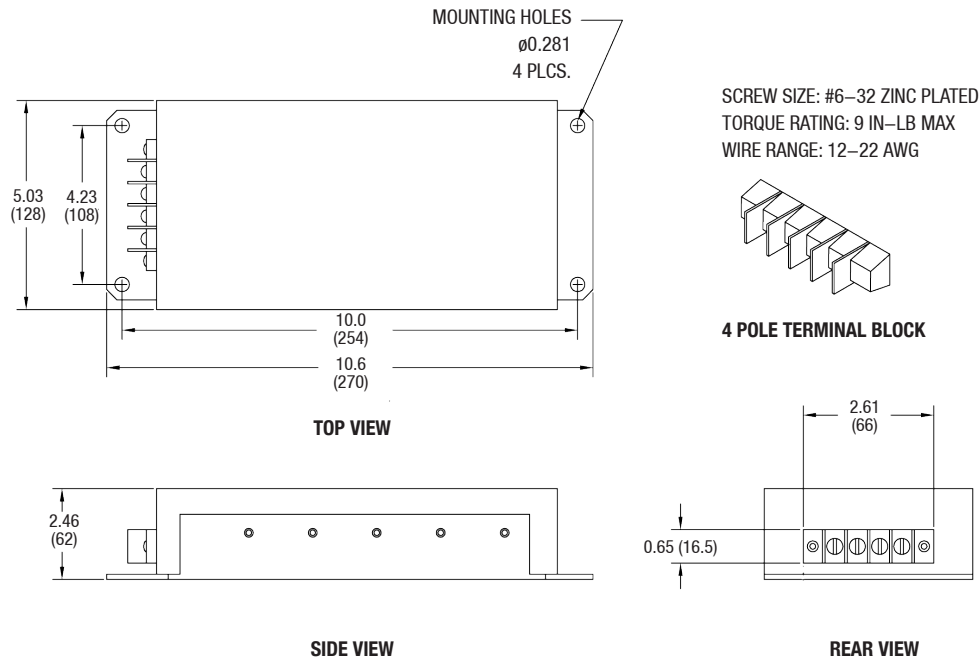
# SPECIFICATIONS

	Configs.		Input Voltage Range	Output Voltage	Output Current (Cont.)	Output Current (Peak)	Current Limiting	Line Regulation	Load Regulation	Output Ripple (Max)	Efficiency (Typical)	Fuse
	AIW	AIR										
ICT1212-12	●	●	10-18 VDC	13.8 VDC +/- 100 mV	10.0 Amps	12.0 Amps	12.5 Amps	1.00%	0.50%	20 mV RMS	89%	20 Amp
ICT1212-20	●	●	11-18 VDC	13.8 VDC +/- 100 mV	16.0 Amps	20.0 Amps	20.5 Amps	1.00%	0.75%	25 mV RMS	85%	35 Amp
ICT1224-5	●	●	11-18 VDC	27.6 VDC +/- 300 mV	4.0 Amps	5.0 Amps	5.5 Amps	1.00%	0.50%	40 mV RMS	85%	15 Amp
ICT1224-10	●	●	11-18 VDC	27.6 VDC +/- 300 mV	8.0 Amps	10.0 Amps	10.5 Amps	1.00%	0.75%	40 mV RMS	85%	30 Amp
ICT1248-5	●	●	11-18 VDC	48.0 VDC +/- 150 mV	5.0 Amps	5.5 Amps	5.5 Amps	1.00%	0.75%	40 mV RMS	80%	30 Amp
ICT2448-5	●	●	21-30 VDC	48.0 VDC +/- 300 mV	4.0 Amps	5.0 Amps	5.5 Amps	1.00%	1.00%	40 mV RMS	85%	20 Amp
ICT2060-12	●	●	20-60 VDC	13.8 VDC +/- 150 mV	10.0 Amps	12.0 Amps	12.5 Amps	0.75%	0.50%	40 mV RMS	85%	12 Amp
ICT2060-20	●	●	20-60 VDC	13.8 VDC +/- 150 mV	17.0 Amps	20.0 Amps	20.5 Amps	0.75%	0.75%	40 mV RMS	85%	20 Amp
ICT206024-5	●	●	20-60 VDC	27.6 VDC +/- 300 mV	4.0 Amps	5.0 Amps	5.5 Amps	1.00%	1.00%	40 mV RMS	83%	12 Amp
ICT206024-10	●	●	24-60 VDC	27.6 VDC +/- 300 mV	8.0 Amps	10.0 Amps	10.5 Amps	1.00%	1.00%	40 mV RMS	82%	20 Amp
ICT50100-12	●	●	50-100 VDC	13.8 VDC +/- 150 mV	10.0 Amps	12.0 Amps	12.5 Amps	0.50%	0.50%	40 mV RMS	85%	12 Amp
ICT50100-20	●	●	50-100 VDC	13.8 VDC +/- 150 mV	17.0 Amps	20.0 Amps	20.5 Amps	0.50%	0.75%	40 mV RMS	85%	20 Amp
ICT5010024-5	●	●	50-100 VDC	27.6 VDC +/- 300 mV	4.0 Amps	5.0 Amps	5.5 Amps	1.00%	0.80%	40 mV RMS	83%	12 Amp
ICT5010024-10	●	●	50-100 VDC	27.6 VDC +/- 300 mV	8.0 Amps	10.0 Amps	10.5 Amps	1.00%	1.00%	40 mV RMS	82%	20 Amp

AIW - Standard Wallmount    AIR - mounted on 19" Rackmount

## OUTLINE DRAWING

DIMENSIONS IN INCHES (MILLIMETRES)



# ICT ISOLATED CONVERTERS

## INSTRUCTION MANUAL



## ICT ISOLATED CONVERTERS

The ICT Isolated Series converters have been designed to operate from a negative or positive ground electrical system, providing complete isolation between primary and secondary circuits, as well as isolation from the chassis. Standard voltage ranges include: 12VDC–12VDC, 12VDC–24VDC, 12VDC–48VDC, and wide range inputs of 20–60VDC–12VDC or 50–100VDC–12VDC. Extra input filtering and spike detection are standard and essential for all applications including site, heavy–duty industrial and off–road equipment.

These instructions should be read before using the product and it should be saved for future reference.

## SETUP

- ▶ Mount converter securely.
- ▶ Do not apply power until unit is completely wired.
- ▶ For best results, wire converter directly to battery using heavy gauge wire.

## WARNING

- ▶ Incorrect wiring may result in serious damage to both the converter and equipment wired to the converter.
- ▶ Unit service should be done at ICT factory.

## TROUBLESHOOTING

- ▶ Check fuse inside unit, if blown, replace with correct fuse.
- ▶ Check for proper voltage at input while converter is under load.
- ▶ Check for erratic voltage conditions at input, which might cause overvoltage circuit to trigger.

## NOTES

- ▶ The Isolated converters can be used in parallel or series configurations. Please contact ICT for further information
- ▶ These converters incorporate a special noise filter design. For proper filter operation, the converter must be chassis grounded
- ▶ Continuous current ratings are for 25¼C ambient temperatures. At higher ambients, derate by 2% per degree C above 25¼C
- ▶ Wall mount (AIW) and 19" Rack mount (AIR) models are available

## LIMITED WARRANTY

ICT Ltd. warrants to the original consumer purchaser that this product shall be in good working order, free from defects in materials and workmanship, for a period of one (1) year from the date of purchase. Should failure occur during the above stated time period, then ICT will, at its option, repair or replace this product at no additional charge except as set forth below. All parts, whether for repair or replacement, will be furnished on an exchange basis. All exchange pieces become the property of ICT. This limited warranty shall not apply if the ICT product has been damaged by unreasonable use, accident, negligence, disaster, service, or modification by anyone other than the ICT factory.

Limited warranty service is obtained by delivering the product during the above stated one (1) year warranty period to an authorized ICT dealer or ICT factory and providing proof of purchase date. If this product is delivered by mail, you will insure the product or assume risk of loss or damage in transit, and prepay shipping charges to the factory.

Every reasonable effort has been made to ensure that ICT product manuals and promotional materials accurately describe ICT product specifications and capabilities at the time of publication. However, because of ongoing improvements and updating of ICT products, ICT cannot guarantee the accuracy of printed materials after the date of publication and disclaims liability for changes, errors or omissions.

If this ICT product is not in good working order, as outlined in the above warranty, your sole remedy shall be repair or replacement as provided above. In no event will ICT be liable for any damages resulting from the use of or the inability to use the ICT product, even if an ICT employee or an authorized ICT dealer has been advised of the possibility of such damages, or for any claim by any other party.

ICT reserves the right to make changes without further notice to any products or documentation for improvement of reliability, function, or design.

ICT Ltd. does not recommend use of its products in life support applications wherein a failure or malfunction of the product may directly or indirectly threaten life or cause injury. The user of ICT products, which are to be used in life support applications as described above, assumes all risks of such use and indemnifies ICT against all damages.



**INNOVATIVE CIRCUIT TECHNOLOGY LTD.**

26921 GLOUCESTER WAY LANGLEY, BRITISH COLUMBIA, CANADA V4W 3Y3

T 604.856.6303 F 604.856.6365 [www.ict-power.com](http://www.ict-power.com)